

## Academic

### Programs of Study

• Business Information Technology.....	AAS
• Business Management.....	AAS, C
• Commercial Music - Multimedia for Songwriters....	C
• Commercial Performance.....	C
• Criminal Justice Technology.....	C
- Corrections	
- Law Enforcement	
• Criminal Justice Technology.....	AAS
• Early Childhood Education.....	AAS, C
• EMT-Paramedic.....	C
• General Technology.....	AAS
• General Transfer.....	AA, AS
• Horticultural Technology.....	AAS
• LPN Career Mobility Ladder (Option A, B).....	AAS
• Nursing.....	AAS
• Radiologic Technology.....	AAS
• Respiratory Care.....	AAS
• Teaching.....	AST
• Veterinary Technology.....	AAS

### Other Programs

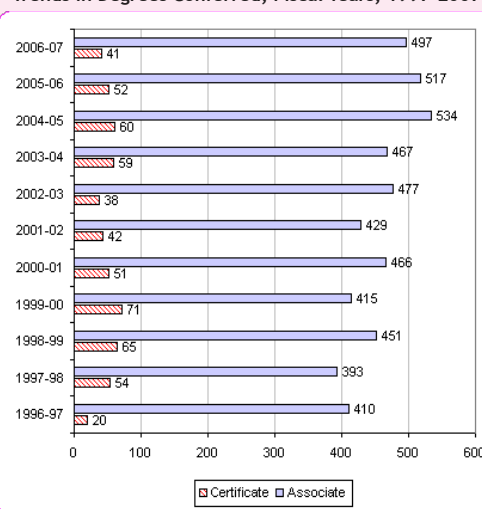
- Career Advancement Sequences
- Emergency Medical Technician (Basic EMT/EMT-IV)

### Degrees Conferred, Fiscal Year, 2006-07

	Associate	Certificate	Total
Total	497	41	538
Men	151	1	152
Women	346	40	386
White	457	39	496
Minority	40	2	42
Giles	23	3	26
Hickman	31	4	35
Lawrence	69	6	75
Lewis	14	2	16
Marshall	46	5	51
Maury	134	11	145
Perry	3	0	3
Wayne	15	0	15
Williamson	87	5	92
Service Area	422	36	458
Outside Service Area	75	5	80
In-state	493	41	534
Out-of-state	4	0	4

Note: July 1, 2006 thru June 30, 2007.

### Trends in Degrees Conferred, Fiscal Years, 1997-2007



## Faculty & Staff

	Faculty	Professional	Support	Total
Total	232	70	76	378
Full-time	97	70	76	243
Part-time	135	0	0	135

Full-time Faculty	N	%
Total	97	100.0%
Women	55	56.7%
Men	42	43.3%
White	87	89.7%
Minority	10	10.3%
Tenured	64	66.0%
On tenure track	28	28.9%
Not on tenure track	5	5.2%
Professor	16	16.5%
Associate Professor	34	35.1%
Assistant Professor	28	28.9%
Instructor	19	19.6%
New Hires	5	5.2%

Note: As of October 1, 2007.

## Accreditations

Columbia State Community College is accredited by the Commission on Colleges of the Southern Association of Colleges and Schools (1866 Southern Lane, Decatur, Georgia 30033-4097; telephone number 404-679-4501) to award the associate degree.

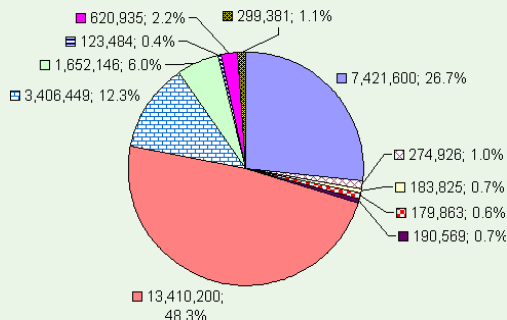
### Professional Accreditations:

- Committee on Accreditation of Educational Programs for the EMS Profession
- National League for Nursing Accrediting Commission
- Joint Review Committee on Education in Radiologic Technology
- Committee on Accreditation of Allied Health Education Programs / Committee on Accreditation of Respiratory Care
- American Veterinary Medical Association Committee on Veterinary Technology Education and Activities

## Institutional Finances

### Revenues, Fiscal Year, 2006-07

Total.....	\$27,763,378
Student tuition & fees.....	7,421,600
Federal operating grants & contracts . . .	274,926
State operating grants & contracts . . . .	183,825
Auxiliary sales & services . . . . .	179,863
Other sources - operating . . . . .	190,569
State appropriations . . . . .	13,410,200
Federal nonoperating grants . . . . .	3,406,449
State nonoperating grants. . . . .	1,652,146
Gifts . . . . .	123,484
Investment income . . . . .	620,935
Capital appropriations . . . . .	299,381



## Columbia State Leadership

Dr. Janet Smith, President

Dr. Cathryn McDonald, Vice President for Academic Services

Dr. Dan Opalewski, Vice President for Student Services and Enrollment Management

Dr. Paul Jennings, Vice President for Planning and Development

Mr. Ken Horner, Vice President for Financial and Administrative Services

Mr. Mike Shuler, Dean, Extended Campuses and Programs

Ms. Emily Siciensky, Associate Vice President for Information Technology

Ms. Joni Lenig, Assistant Vice President for Faculty and Programs

### Institutional Research and Analysis

1665 Hampshire Pike  
Columbia, TN 38401  
www.columbiastate.edu/research  
Tel: 1-931-540-2722 • TDD: 1-800-848-0298



2007-2008

## Mini Fact Book

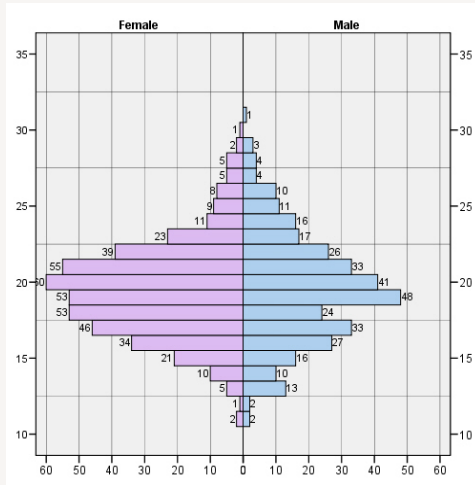


# Columbia State Community College

## Freshmen Enrollment

First-time Freshmen, 2007*	N	%
Total	1,003	100.0%
Full-time	420	41.9%
Part-time	583	58.1%
Male	422	42.1%
Female	581	57.9%
White	857	85.4%
Minority	146	14.6%
Traditional (Under 25)	893	89.0%
Non-traditional (25 and Over)	110	11.0%
In-state	817	81.5%
Out-of-state	186	18.5%

Note: \*Cohort includes Summer returning Fall and Fall freshmen.



Frequency Distribution of ACT Composite Scores by Gender, 2007\*

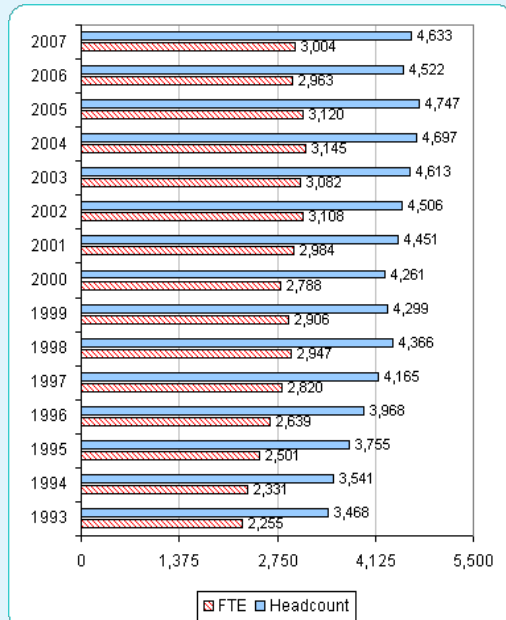
Score	31	30	29	28	27	26	25	24	23	22	21	20	19	18	17	16	15	14	13	12	11	
Male	1	0	3	4	4	10	11	16	17	26	33	41	48	24	33	27	16	10	13	2	2	
Female	0	1	2	5	5	8	9	11	23	39	55	60	53	53	46	34	21	10	10	5	1	2
TOTAL	1	1	5	9	9	18	20	27	40	65	88	101	101	77	79	61	37	20	18	3	4	

## Fall Enrollment

Credit Enrollment, Fall 2007	N	%
Total	4,633	100.0%
Full-time	2,262	48.8%
Part-time	2,371	51.2%
Men	1,652	35.7%
Women	2,981	64.3%
Minority	604	13.0%
White	4,029	87.0%
Traditional (Under 25)	3,107	67.1%
Non-traditional (25 And Over)	1,526	32.9%
Giles County	234	5.1%
Hickman County	148	3.2%
Lawrence County	649	14.0%
Lewis County	221	4.8%
Marshall County	338	7.3%
Maury County	1,205	26.0%
Perry County	20	0.4%
Wayne County	220	4.7%
Williamson County	1,040	22.4%
Service Area	4,075	88.0%
Outside Service Area	558	12.0%
In-state	4,605	99.4%
Out-of-state	28	0.6%

Note: As of census date.

## Trends in Credit Enrollment, Fall, 1993-2007



## Tuition & Fees\*

Maintenance Fees	
In-State Students	\$101 per semester hour \$1182 maximum per semester fall/spring
Out-of-State Students	\$407 per semester hour \$4,720 maximum per semester fall/spring
Late Registration	\$10 fee

### Regents Online Degree Program

In-State Students	\$101 per hour, no maximum
Out-of-State Students	\$407 per hour, no maximum
Online Course Fee	\$40 per hour, no maximum

### Application Fee

New Students Only	\$10 (this fee is added to your bill at time of registration)
-------------------	---

### Access Fees

Parking	\$5 per semester
Additional Parking Decals	\$1 per decal
Technology	\$10 per semester hour or \$112.50 maximum per semester

### Miscellaneous Fees

Student Activity Fee	\$3 per semester
Library Fines	\$0.10 per day
Internet Course Fee	\$25 per credit hour
Individual Music Instruction	\$60 per credit hour

\*Fee change policies: The college, in conjunction with the Tennessee Board of Regents, reserves the right to add, delete or change fees for admission to the college or for services rendered by the college at any time without prior notice to the public.

## Campus Resources

### Library

Print materials circulated	13,132
Patrons using libraries	103,752
Library instruction/orientation classes	132
Students attending library instruction/orientation classes	2,240
Requests for assistance (questions)	13,258
Books borrowed from other libraries	345
Books loaned to other libraries	281
Number of print books owned	74,531
Number of electronic books owned	55,450
Number of journals and newspapers subscribed to (print)	335
Number of databases subscribed to	55
Number of audiovisual units	5,089

### Use of library databases

Sessions	60,637
Retrievals	46,138
Searches	229,805

Note: As of June 30, 2007.

### Information Technology

- Electronic mail access 24x7 with automated spam filtering
- Self Service access for registering for classes and reviewing grades 24x7
- Support for all administrative systems and for academic computing
- Thirteen (13) computer labs with over 300 available pc's
- Lab computers with access to productivity tools for student learning
- Access to on-line courses and support for state-wide ROPD
- Telecommunications system based on VOIP
- Voice mail available via electronic mail
- Audible broadcast messages for weather alerts and emergencies via phone system including all classrooms and labs
- Fast internet connections and state-of-the-art internal network infrastructure with uptime monitoring and virus protection
- Wireless connectivity available in all locations
- A fully staffed helpdesk from 7:45am-4:15PM